



# Nectin 4 Polyclonal Antibody

<b>Catalog No</b>	YP-Ab-17056
<b>Isotype</b>	IgG
<b>Reactivity</b>	Human;Rat;Mouse;
<b>Applications</b>	WB;ELISA
<b>Gene Name</b>	PVRL4
<b>Protein Name</b>	Poliovirus receptor-related protein 4
<b>Immunogen</b>	The antiserum was produced against synthesized peptide derived from human PVRL4. AA range:312-361
<b>Specificity</b>	Nectin 4 Polyclonal Antibody detects endogenous levels of Nectin 4 protein.
<b>Formulation</b>	Liquid in PBS containing 50% glycerol, 0.5% BSA and 0.02% sodium azide.
<b>Source</b>	Polyclonal, Rabbit,IgG
<b>Purification</b>	The antibody was affinity-purified from rabbit antiserum by affinity-chromatography using epitope-specific immunogen.
<b>Dilution</b>	Western Blot: 1/500 - 1/2000. ELISA: 1/5000. Not yet tested in other applications.
<b>Concentration</b>	1 mg/ml
<b>Purity</b>	≥90%
<b>Storage Stability</b>	-20°C/1 year
<b>Synonyms</b>	PVRL4; LNIR; PRR4; Poliovirus receptor-related protein 4; Ig superfamily receptor LNIR; Nectin-4
<b>Observed Band</b>	55kD
<b>Cell Pathway</b>	Cell membrane ; Single-pass type I membrane protein . Cell junction, adherens junction . Colocalizes with AFDN at cadherin-based adherens junctions (PubMed:11544254).; [Processed poliovirus receptor-related protein 4]: Secreted . The secreted form is found in breast tumor patients (PubMed:15784625).
<b>Tissue Specificity</b>	Predominantly expressed in placenta. Not detected in normal breast epithelium but expressed in breast carcinoma.
<b>Function</b>	function:Seems to be involved in cell adhesion through trans-homophilic and -heterophilic interactions, the latter including specifically interactions with PVRL2/nectin-1. Does not act as receptor for alpha-herpesvirus entry into cells.,PTM:The soluble form is produced by proteolytic cleavage at the cell surface (shedding), probably by ADAM17/TACE.,similarity:Belongs to the nectin family.,similarity:Contains 1 Ig-like V-type (immunoglobulin-like) domain.,similarity:Contains 2 Ig-like C2-type (immunoglobulin-like) domains.,subcellular location:Colocalizes with MLLT4 at cadherin-based adherens junctions.,subcellular location:The secreted form is found in breast tumor patients.,subunit:Self-associates. Interacts via its Ig-like V-type domain with PVRL1/nectin-1 Ig-like V-type domain. Interacts via its C-terminus with MLLT4.,tissue specificity:Predominantly expressed in placenta. Not detecte



## Background

This gene encodes a member of the nectin family. The encoded protein contains two immunoglobulin-like (Ig-like) C2-type domains and one Ig-like V-type domain. It is involved in cell adhesion through trans-homophilic and -heterophilic interactions. It is a single-pass type I membrane protein. The soluble form is produced by proteolytic cleavage at the cell surface by the metalloproteinase ADAM17/TACE. The secreted form is found in both breast tumor cell lines and breast tumor patients. Mutations in this gene are the cause of ectodermal dysplasia-syndactyly syndrome type 1, an autosomal recessive disorder. Alternatively spliced transcript variants have been found but the full-length nature of the variant has not been determined.[provided by RefSeq, Jan 2011],

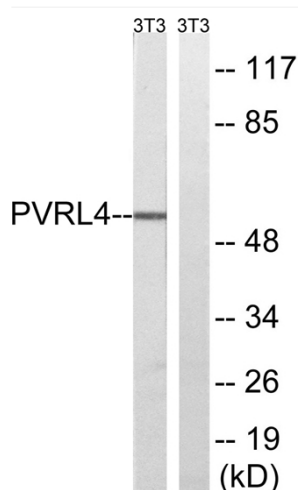
## matters needing attention

Avoid repeated freezing and thawing!

## Usage suggestions

This product can be used in immunological reaction related experiments. For more information, please consult technical personnel.

## Products Images



Western blot analysis of lysates from NIH/3T3 cells, using PVRL4 Antibody. The lane on the right is blocked with the synthesized peptide.